

Dartmoor National Park Management Plan Review

Public questionnaire responses

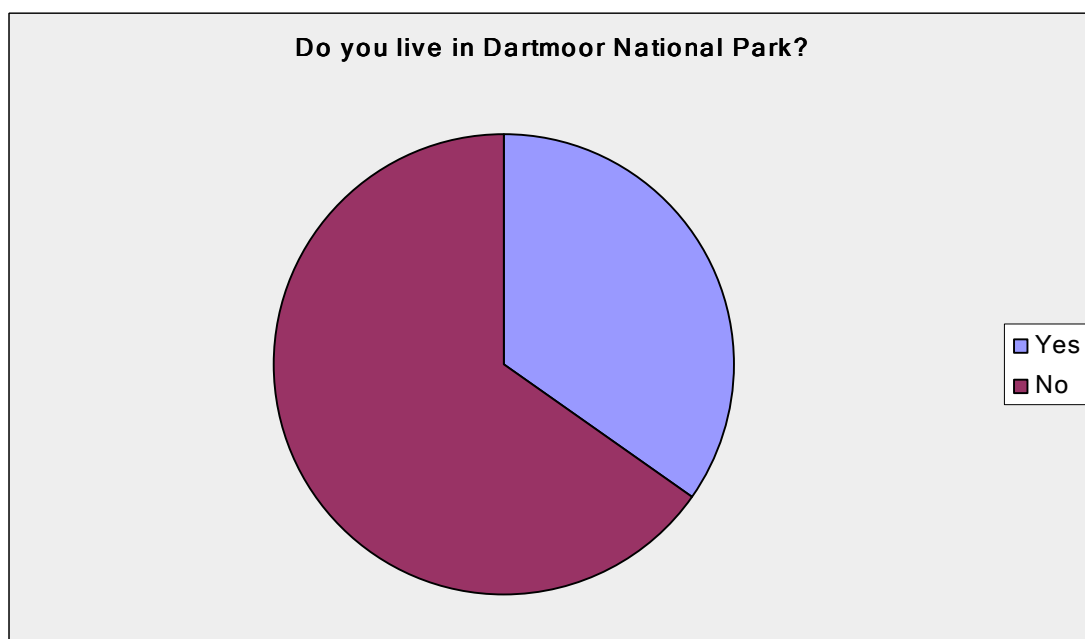
As part of the review of the National Park Management Plan for Dartmoor, an online questionnaire was set up to gather views on the issues facing the National Park, and what the focus for activity over the next five years should be.

The consultation ran from 20 September to 23 November 2012. It was publicised on the front page of the DNPA website, via Twitter, local newspapers, Parish Councils, local schools, local groups, partnerships and at the DNPA offices in Parke and the outreach vehicle.

Consultation responses

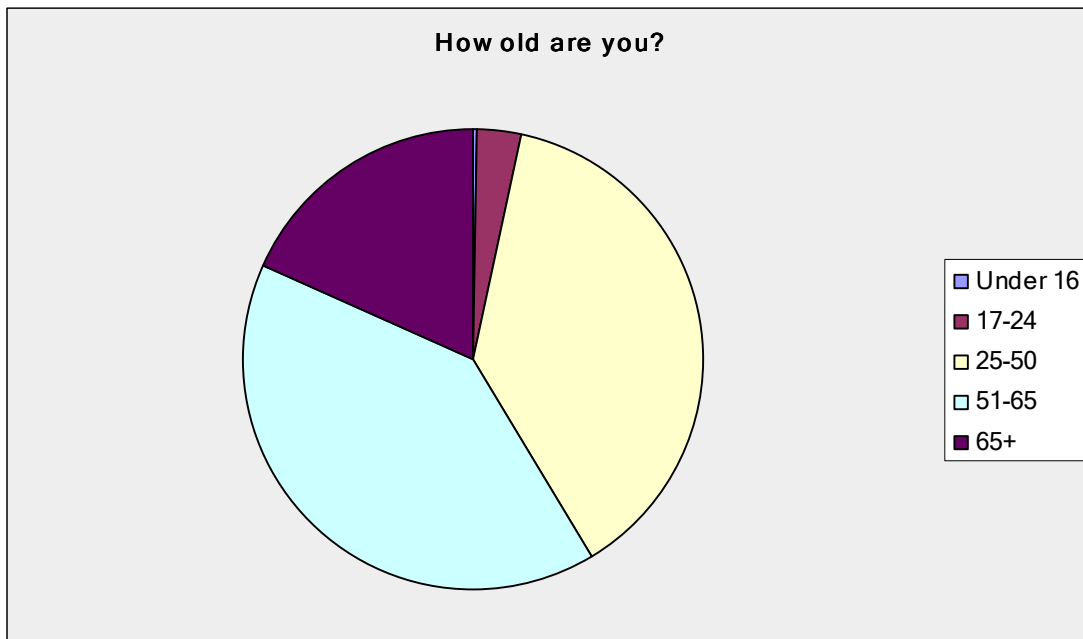
In total, 307 responses were made. In addition, over 941 unique page views of the webpages relating to the National Park Management Plan were made during that period, indicating a high level of awareness of the review.

Of those who responded, 65% did not live within the National Park.



Of those who do not live in the National Park, nearly all (98%) had visited Dartmoor within the last 5 years. This indicates that the views given represent a reasonable mix of both residents and visitors.

Very few responses were received from people under the age of 25, although 38% of respondents were between 25 and 50. This mirrors research that suggests people visit the National Park more in their mid 20s upwards, perhaps when they have a young family, or return to their home town having left for education or employment.



Two-thirds of respondents were male.

Only 3% of respondents were from black or ethnic minority groups.

8% of respondents considered themselves to have a disability.

What is special to you about Dartmoor?

People were asked to sum up in three words what was special to them about Dartmoor. The wordle below gives an idea of the sorts of words that were used. Wilderness, space, openness, tranquillity, the landscape and natural beauty, freedom, access, unspoilt are some of the words that were most used.



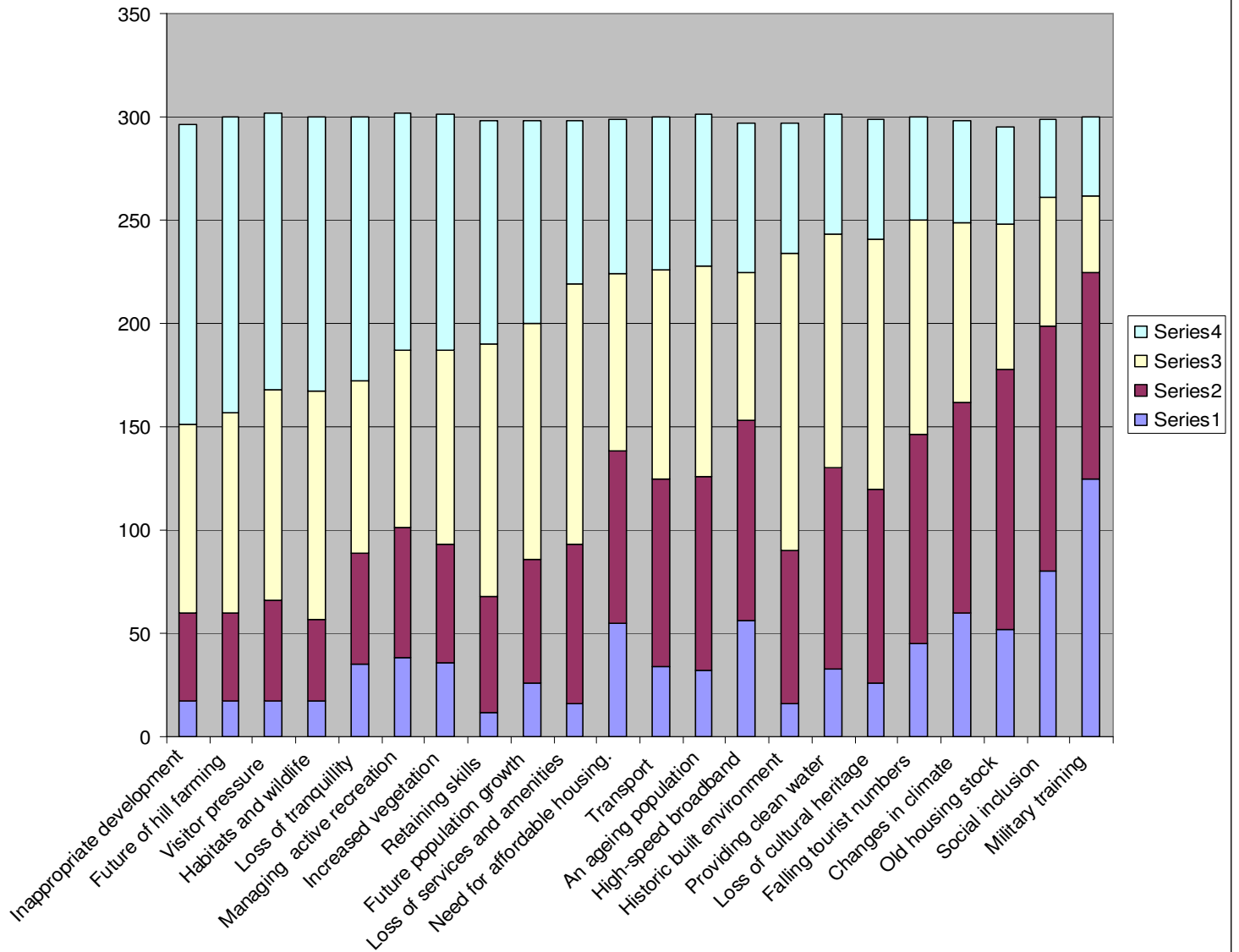
Views on the issues facing the National Park

People were asked to consider a number of issues that had been identified which are likely to affect Dartmoor over the next 5 years. The issues identified were:

Increased vegetation on the moor, changing the open character of landscape, and providing a threat to access and archaeology.
The future viability of hill farming.
Some habitats and wildlife under threat from inappropriate management, fragmentation, invasive non-native species and climate changes.
Increased importance of providing clean water from Dartmoor.
Changes in climate resulting in increased frequency of extreme weather events and flooding.
Ensuring land based and building skills are sustained for future management of the National Park.
Future population growth and the scope to increase use of Dartmoor in sustainable ways which provide economic benefits to local communities but also potentially add pressures on the National Park.
Challenges in managing more active recreation alongside quiet enjoyment of the National Park.
Visitor pressure on 'honeypot' sites with congestion, litter, and camp fires.
Falling tourist numbers, particularly in serviced accommodation (e.g. hotels, B&Bs) leading to reduced employment.
Inability of certain sectors of society to access the national park.
Conflict between military training (live firing) and public access.
An ageing population and fewer young people living and working on Dartmoor.
Loss of cultural heritage such as threats to local fairs, traditions etc.
High proportion of old housing stock with poor energy efficiency, leading to increased heating costs, exacerbated by rising and volatile energy prices.
Limited high-speed broadband coverage reducing economic and learning opportunities and exacerbating rural isolation.
Continued high house prices and need for affordable housing.
Loss of local services and amenities.
Rising transport costs, exacerbated by reductions in public transport within and to the National Park.
Threats from inappropriate development in and affecting the National Park.
Enabling future viable use of historic buildings and managing change in the historic built environment.
Loss of tranquillity due to light pollution, increased traffic, large scale events and active sports.

Respondents were asked to indicate how important they felt these issues were, on a scale of 1-4, with 1 being not important, and 4 being very important. The graph below shows the responses relating to all the issues listed.

How important are these issues facing Dartmoor?



When analysed by the number of people scoring an issue as 'very important' (4) the issues were ranked as follows:

1. Threats from inappropriate development
2. Future viability of hill farming
3. Visitor pressure on 'honeypot' sites
4. Habitats and wildlife under threat
5. Loss of tranquillity
6. Managing more active recreation
7. Increased vegetation on the moor
8. Sustaining land based and building skills
9. Future population growth
10. Loss of local services and amenities
11. Need for affordable housing.
12. Rising transport costs and reduced public transport
13. An ageing population
14. Limited high-speed broadband
15. Managing change in the historic built environment
16. Providing clean water
17. Loss of cultural heritage
18. Falling tourist numbers
19. Changes in climate
20. Old housing stock
21. Social inclusion
22. Conflict between military training and public access.

When analysed by the number of people who scored an issue as either 'important' or 'very important' (3 or 4) the issues were ranked as follows:

1. Habitats and wildlife under threat
2. Future viability of hill farming.
3. Threats from inappropriate development
4. Visitor pressure on 'honeypot' sites
5. Sustaining land based and building skills
6. Future population growth
7. Loss of tranquillity
8. Increased vegetation on the moor
9. Managing change in the historic built environment
10. Loss of local services and amenities
11. Managing more active recreation
12. Loss of cultural heritage
13. Rising transport costs and reduced public transport
14. An ageing population
15. Providing clean water
16. Need for affordable housing.
17. Falling tourist numbers
18. Limited high-speed broadband
19. Changes in climate
20. Old housing stock
21. Social inclusion

22. Conflict between military training and public access.

From this it can be seen that although a different order of issues occurs, the same issues appear in the top 4, ie

- Threats from inappropriate development
- Future viability of hill farming
- Visitor pressure on ‘honeypot’ sites
- Habitats and wildlife under threat

In comparison, conflict between military training and public access is clearly not seen as a high priority by respondents.

If the responses from people who live in the National Park are compared with those who do not (ie the residents compared with the visitors), then there is some difference in the ranking of issues. There is some consistency – for example the future viability of hill farming, threats to habitats and wildlife, and visitor pressure on ‘honeypot sites’ all feature in the top 4. However, visitors are more likely than residents to consider the loss of tranquillity as important, and residents consider broadband as more important than visitors. Interestingly although the loss of local services and reduced public transport do not feature highly for either group, they are ranked higher by visitors than residents.

Respondents who do not live in the National Park	Respondents who live in the NP
1. Threats from inappropriate development	1. Future viability of hill farming.
2. Visitor pressure on ‘honeypot’ sites	2. Increased vegetation on the moor
3. Habitats and wildlife under threat	3. Habitats and wildlife under threat
4. Future viability of hill farming.	4. Visitor pressure on ‘honeypot’ sites
5. Loss of tranquillity	5. Sustaining land based and building skills
6. Managing more active recreation	6. Threats from inappropriate development
7. Sustaining land based and building skills	7. Limited high-speed broadband
8. Increased vegetation on the moor	8. Managing more active recreation
9. Future population growth	9. An ageing population
10. Loss of local services and amenities	10. Future population growth
11. Rising transport costs and reduced public transport	11. Need for affordable housing.
12. Need for affordable housing.	12. Loss of local services and amenities
13. Falling tourist numbers	13. Rising transport costs and

	reduced public transport
14. Providing clean water	14. Managing change in the historic built environment
15. Loss of cultural heritage	15. Old housing stock
16. Managing change in the historic built environment	16. Providing clean water
17. An ageing population	17. Loss of cultural heritage
18. Limited high-speed broadband	18. Changes in climate
19. Changes in climate	19. Loss of tranquillity
20. Social inclusion	20. Conflict between military training and public access.
21. Conflict between military training and public access.	21. Falling tourist numbers
22. Old housing stock	22. Social inclusion

Management Plan Ambitions

The current Management Plan includes 18 long term Ambitions for the National Park. These are listed below.

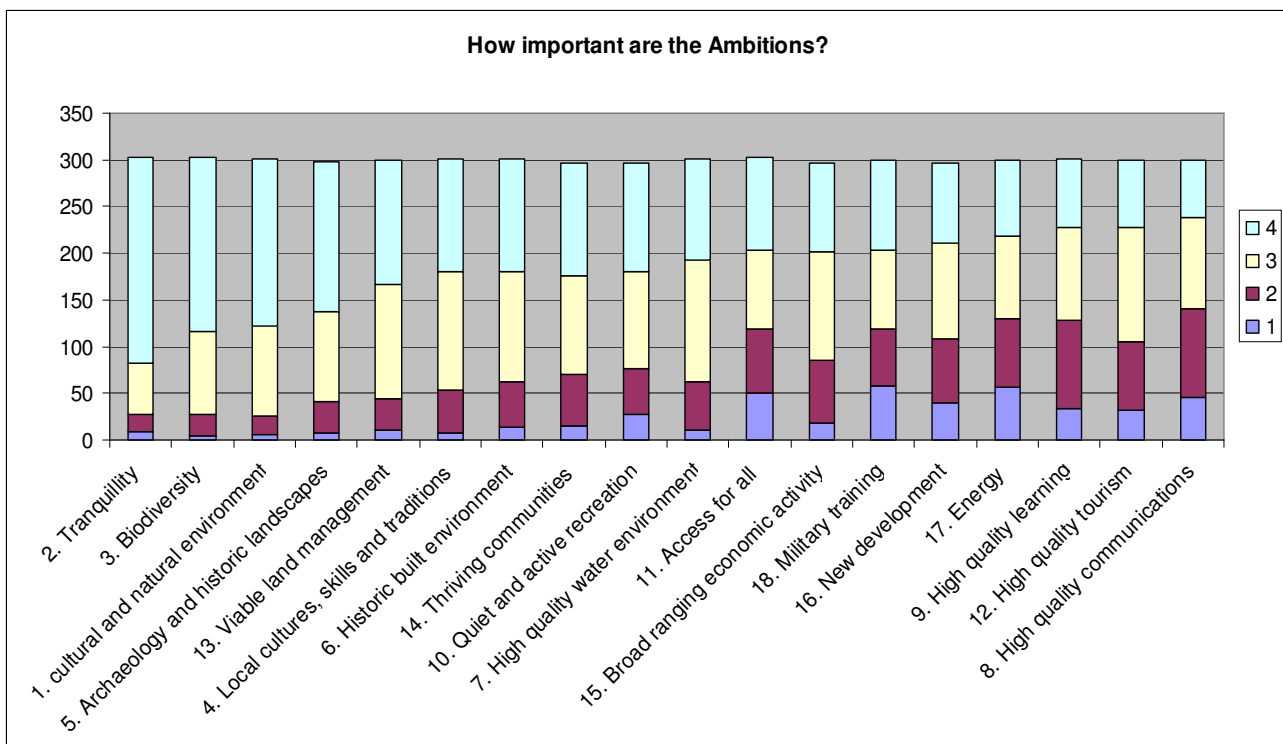
Current Ambitions:

1. Dartmoor will retain a rich cultural and natural environment, reflecting a living and working upland landscape
2. Dartmoor will provide the opportunity to experience solitude, peace, dark night skies and a sense of space
3. Dartmoor will support a diverse range of plants and animals characteristic of the area in a network of healthy, interlinked habitats and ecosystems
4. Local cultures, skills and traditions will be sustained and celebrated as an integral part of modern Dartmoor life
5. Dartmoor's extensive archaeological and historic landscapes will be valued and maintained
6. Dartmoor's historic built environment will remain high quality and locally distinctive, reflecting the use of traditional styles, patterns, materials and skills.
7. Dartmoor's distinctive and high quality water environment will be managed for maximum environmental and public benefits
8. High quality and accessible communications will increase understanding of Dartmoor National Park and enable the enjoyment and safeguarding of its special qualities
9. High quality, diverse learning experiences will be available for people of all ages and backgrounds to enable them to understand, value and contribute to the conservation and enhancement of Dartmoor
10. Dartmoor will offer a variety of opportunities for everyone seeking inspiration, peace and active recreation in harmony with each other, the local community and the area's special qualities
11. Dartmoor will provide opportunities for access for all
12. All forms of tourism on Dartmoor will provide high quality visitor experiences and will make a contribution to the environment, local economy and communities of the National Park

13. Viable land management practices will continue to play a central role in conserving Dartmoor's special qualities
14. Thriving Dartmoor communities will have a range of local services, amenities, housing and employment opportunities
15. Broad ranging economic activity will support Dartmoor's special qualities and provide local sources of employment
16. New development will positively contribute to local distinctiveness with high standards of design and energy efficiency
17. Dartmoor will be an exemplar of low energy consumption and the production of renewable energy from sources compatible with Dartmoor's special qualities
18. All military training taking place on Dartmoor will be consistent with national park purposes, and such land will be managed as an exemplar of conservation and recreational opportunity

Respondents were asked to say how important they thought these Ambitions still are for Dartmoor, with 4 being very important, and 1 being not important. The results are shown below, ranked in order (from left to right) of the Ambitions that people felt were 'very important'. The top 4 Ambitions, which over half of respondents scored as 'very important' are:

- Dartmoor will provide the opportunity to experience solitude, peace, dark night skies and a sense of space
- Dartmoor will support a diverse range of plants and animals characteristic of the area in a network of healthy, interlinked habitats and ecosystems
- Dartmoor will retain a rich cultural and natural environment, reflecting a living and working upland landscape
- Dartmoor's extensive archaeological and historic landscapes will be valued and maintained



archaeology and the historic built environment scored highly, although the issues relating to these were not considered to be as important in the analysis above, suggesting that these special qualities are still highly valued, even if respondents did not relate particularly strongly to the issues identified.